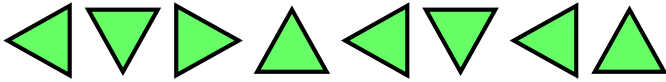


# Challenge cards



Problem solving and reasoning cards:

Circle and correct the mistake in the pattern.



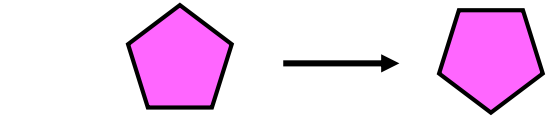
The correct shape is:



The next shape in the pattern is:



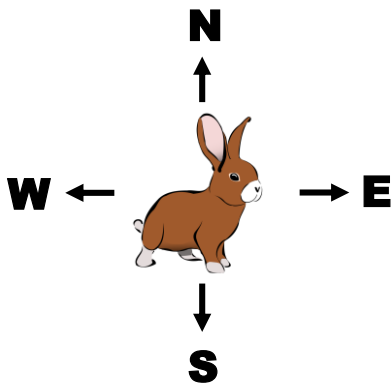
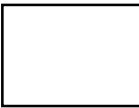
Describe the pattern.



I have rotated the shape three quarter turns clockwise.

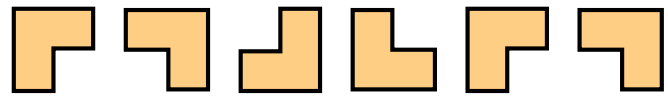
What mistake has Jess made?

What will the shape look like after three quarter turns clockwise?

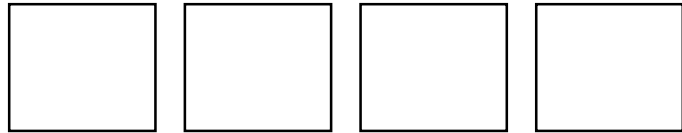


After 8 half turns clockwise the rabbit will be facing West.

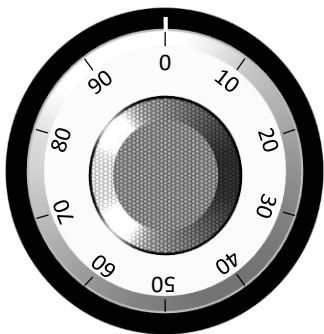
True or false? Explain your answer.



Draw the next 4 shapes in the pattern.



Describe the pattern.



Lock combination:

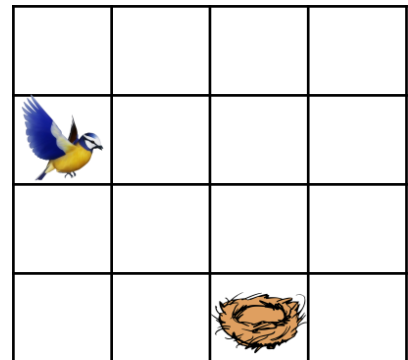
50, 75, 50, 25

Start at 0.  
Write the instructions to unlock the safe.

The first one has been done for you.

Half turn clockwise...

Find as many different routes as you can from the bird to its nest.



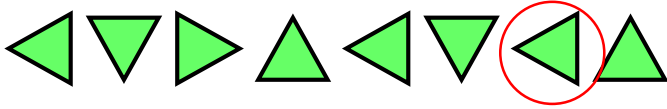
What is the shortest route?

# Answers - Challenge cards

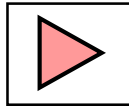


Problem solving and reasoning cards:

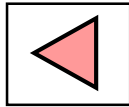
Circle and correct the mistake in the pattern.



The correct shape is:

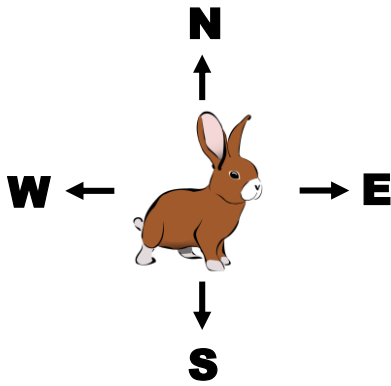


The next shape in the pattern is:



Describe the pattern.

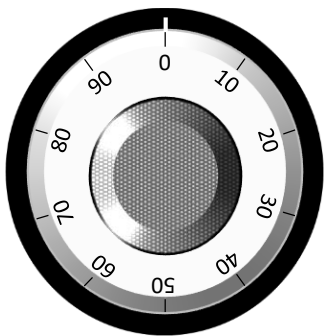
Rotation of a quarter turn anticlockwise each time.



After 8 half turns clockwise the rabbit will be facing West.

True or false?

False, the rabbit will be facing East.



Lock combination:

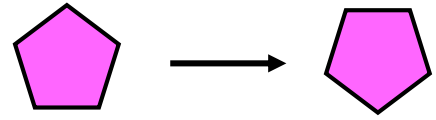
50, 75, 50, 25

Start at 0.

Write the instructions to unlock the safe.

The first one has been done for you.

Half turn clockwise... quarter turn clockwise, quarter turn anticlockwise, quarter turn anticlockwise.

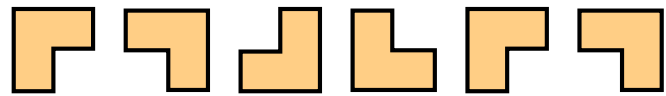
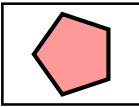


I have rotated the shape three quarter turns clockwise.

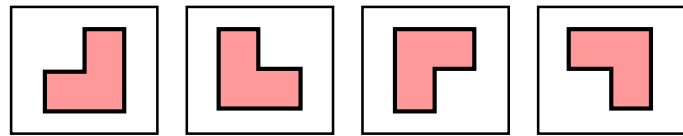
What mistake has Jess made?

Jess has rotated the shape a half turn.

What will the shape look like after three quarter turns clockwise?



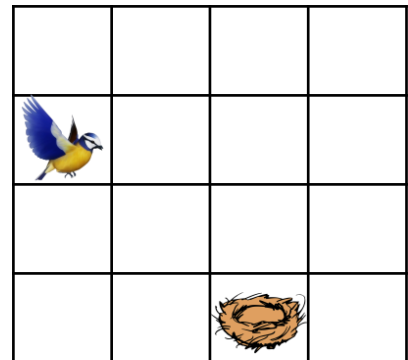
Draw the next 4 shapes in the pattern.



Describe the pattern.

The shape is being rotated a quarter turn clockwise each time.

Find as many different routes as you can from the bird to its nest. Any valid route.



What is the shortest route? Any 4-square route.