

# Homophones

LO: To identify homophones

Match each of these words to the homophones below.

**Be**

**Blue**

**Bare**

**Steal**

**To**

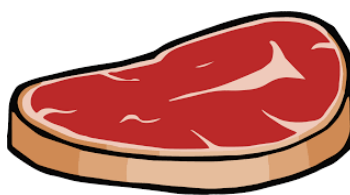
**Flour**

**High**

**Meet**



Bee >



Meat >



Blew >



Hi >



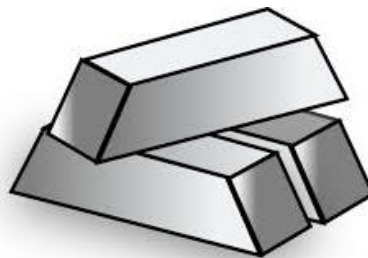
Bear >



Flower >

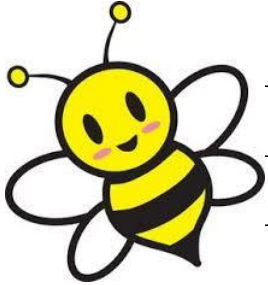


Two >



Steel >

**Write a sentence using the right homophones for each picture.**



---

---

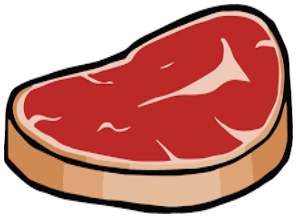
---



---

---

---



---

---

---



---

---

---