

Science

LO: Use the idea that light travels in straight lines to explain why shadows have the same shape as the objects that cast them.



Watch the following clips about shadows.

<https://www.bbc.co.uk/bitesize/clips/z6fnvcw>

<https://www.bbc.co.uk/bitesize/clips/z8vfb9q>

Using the key vocabulary, create a science fact poster with labelled diagrams/illustrations explaining how and why shadows are formed and are the same shape as the objects that cast them. If it is a sunny day, look for shadows around you. Are they the same shape as the objects that are casting the shadows?

Key words:

opaque

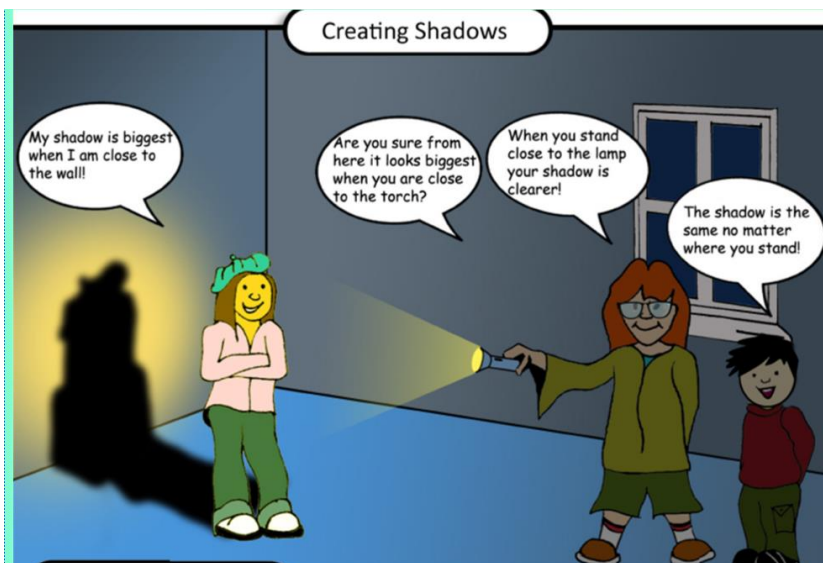
translucent

transparent

straight lines

shadow

light source



Look at the image (left) and plan an investigation to investigate one of the statements. Remember to include the following:

- what you are planning to investigate
- what you will need
- what variable you will change
- what variables you will keep the same
- a diagram of your planned investigation
- your prediction

If you carry out the investigation, record your measurements and write a conclusion about what you have found out.