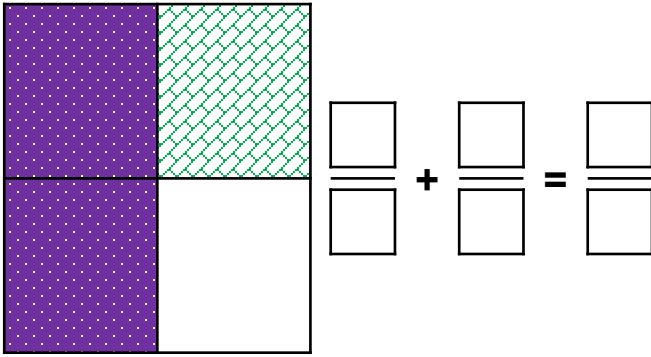


Add Fractions within 1

1a. This model shows the addition of two fractions with different denominators.



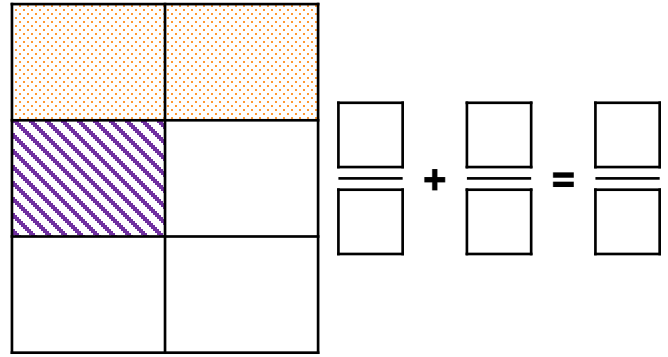
What calculation could it show?



PS

Add Fractions within 1

1b. This model shows the addition of two fractions with different denominators.



What calculation could it show?



PS

2a. True or false?

$$\frac{1}{6} + \frac{2}{3} = \frac{5}{6}$$



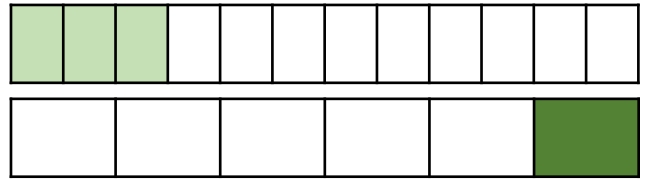
Explain your answer.



R

2b. True or false?

$$\frac{3}{12} + \frac{1}{6} = \frac{7}{12}$$



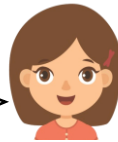
Explain your answer.



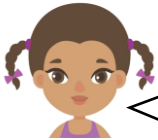
R

3a. Anya and Fi have eaten part of a pizza.

I ate $\frac{1}{5}$ of the pizza.



Anya



Fi

I ate between $\frac{4}{10}$ and $\frac{7}{10}$ of the pizza.

What fraction of the pizza could they have eaten altogether?
Show your working.



PS

3b. Titus and Han have eaten part of a chocolate bar.

I ate $\frac{1}{4}$ of the chocolate bar.



Titus



Han

I ate between $\frac{1}{8}$ and $\frac{4}{8}$ of the chocolate bar.

What fraction of the chocolate bar could they have eaten altogether?
Show your working.



PS