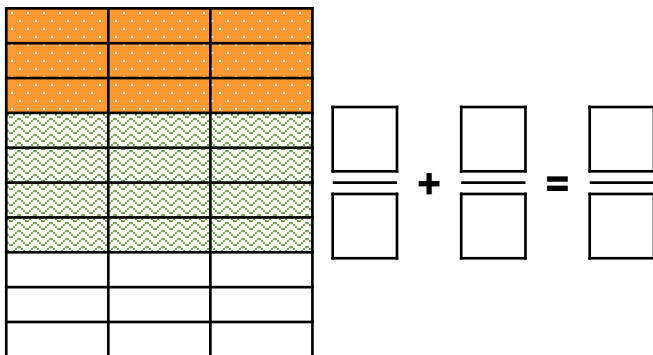


Add Fractions within 1

7a. This model shows the addition of two fractions. All the denominators are different.



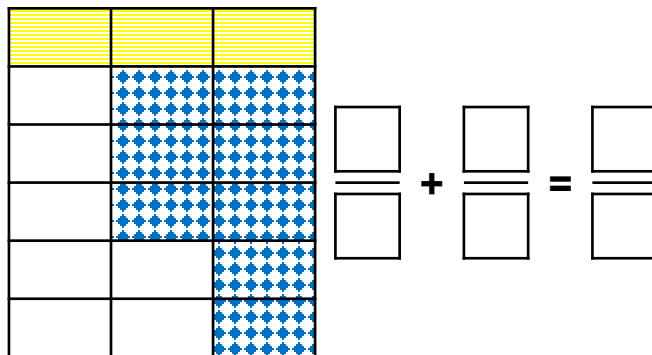
What calculation could it show?



PS

Add Fractions within 1

7b. This model shows the addition of two fractions. All the denominators are different.



What calculation could it show?



PS

8a. True or false?

$$\frac{4}{15} + \frac{7}{12} = \frac{49}{60}$$

Explain your answer.



R

8b. True or false?

$$\frac{11}{21} + \frac{5}{14} = \frac{37}{42}$$

Explain your answer.



R

9a. Baz and Leo have eaten part of a quiche.

I ate $\frac{5}{12}$ of the quiche.



Baz



Leo

I ate between $\frac{1}{9}$ and $\frac{4}{9}$ of the quiche.

What fraction of the quiche could they have eaten altogether?

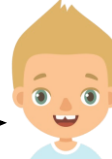
Show your working.



PS

9b. Tom and Harper have eaten part of a garlic bread.

I ate $\frac{1}{6}$ of the garlic bread.



Tom



Harper

I ate between $\frac{1}{8}$ and $\frac{4}{8}$ of the garlic bread.

What fraction of the garlic bread could they have eaten altogether?

Show your working.



PS