

# The Digestive System

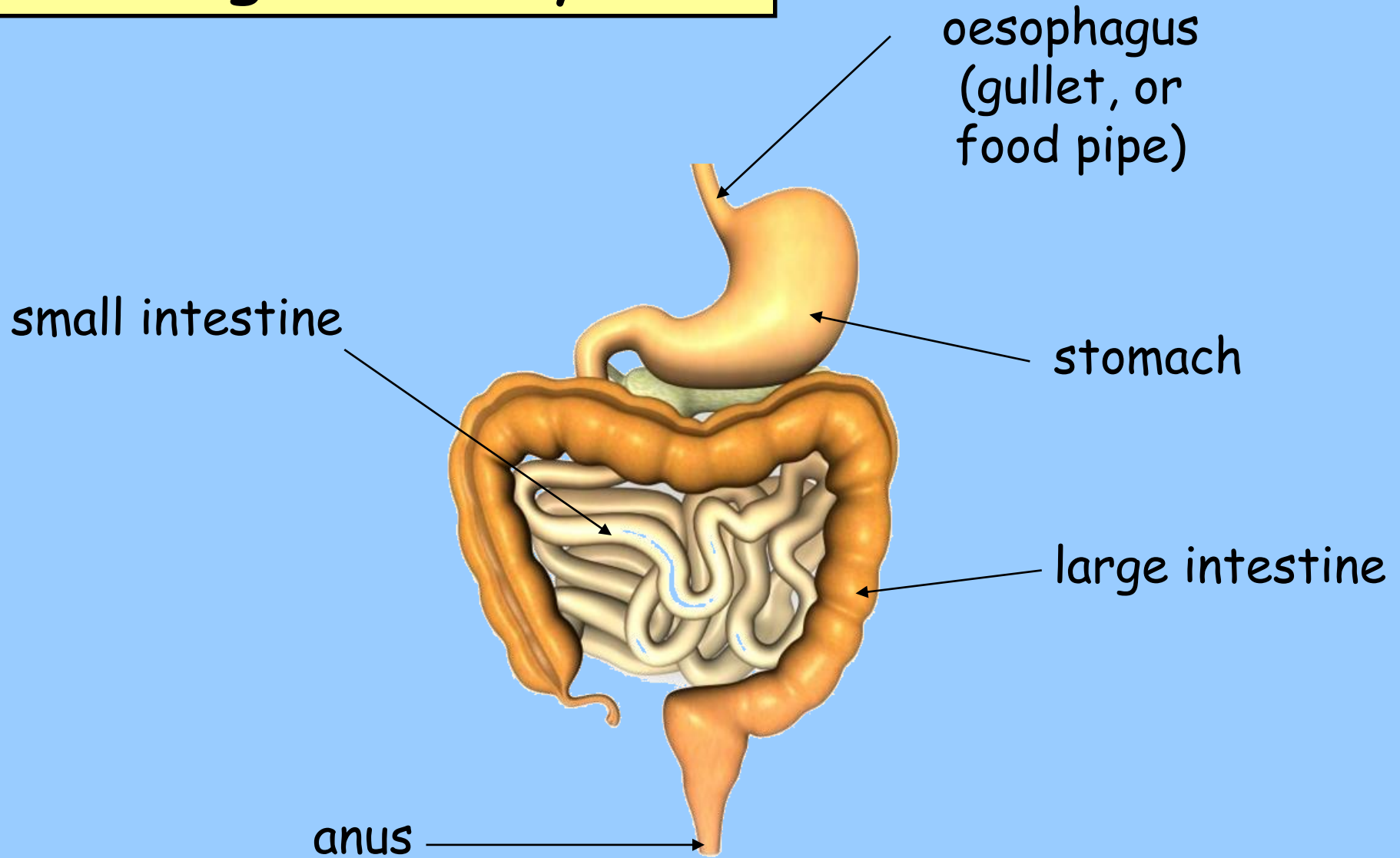
How do we get from this...



...to this?



# The Digestive System



# The Digestive System

Each part has a different job to do:



The mouth contains teeth.

These chew the food and break it into smaller pieces.

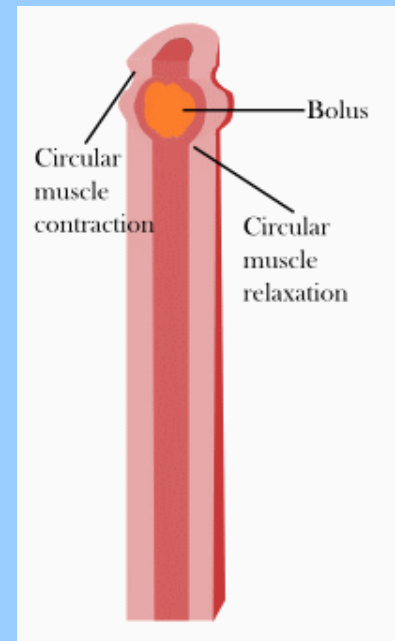
The tongue pushes food to the back of the mouth so you can swallow it.

# The Digestive System

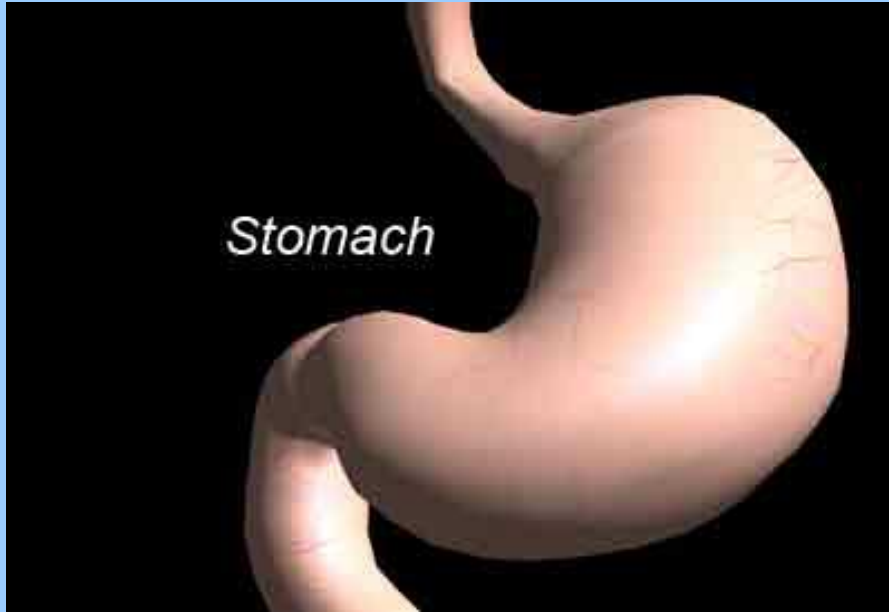


The oesophagus, or food pipe, joins the mouth and the stomach.

Food is squeezed along this tube into the stomach.



# The Digestive System

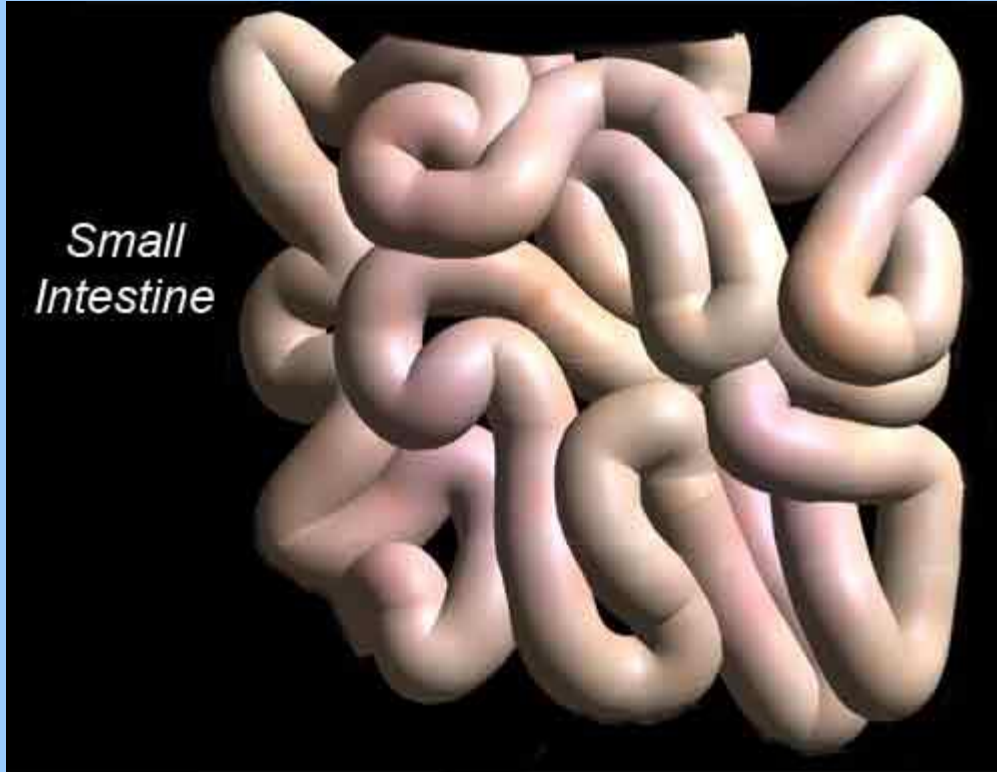


The stomach is a bag of acid.

The acid in the stomach, and special chemicals called enzymes break down the food even more.



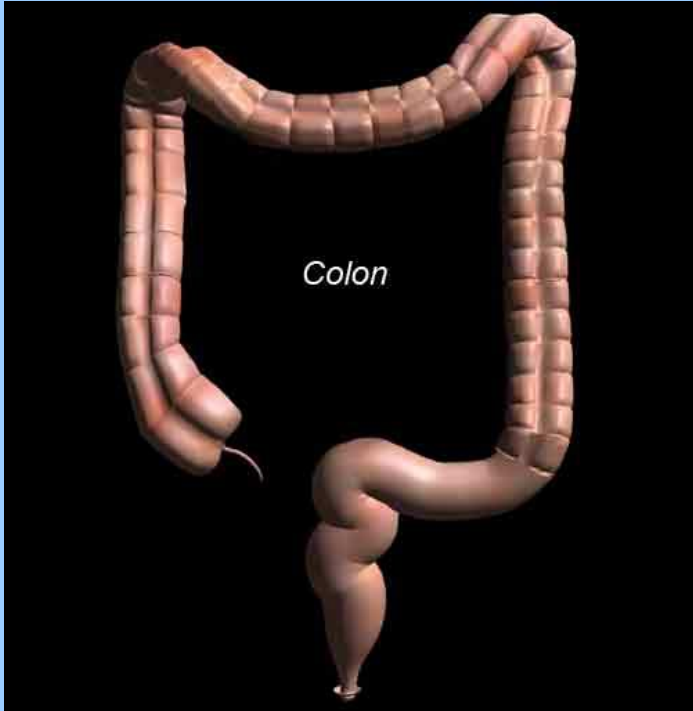
# The Digestive System



The small intestine is 6-7 metres long.

In the small intestine, the broken down food gets into the blood so the body can use it.

# The Digestive System



The large intestine is about 1.5 metres long.

In the large intestine, the body absorbs a lot of water back from the digested food.

# The Digestive System



At the end of the digestive system, the left over stuff that the body can't use leaves the body through the anus when you go to the toilet.

